



# Design that wows

A T.W. Lewis architect describes exactly what influences him as he designs new homes

## Show and tell

Patrick McGlone has his favorites. His favorite floor plans, all at Valencia in Chandler, include:

**The Tienda plan at Andorra**, for the openness of the plan and its rotunda foyer.

**The LaCosta at Finesterra**, for its two-way fireplace between the living and family rooms and its many options.

**The Sevilla at San Sebastian**, for its side-turn garage, not visible from the street. He also likes the breezeway and courtyard outside the entry tower, allowing a procession to the front door.

Among his favorite architectural features on a new home are shutters that bring more color to Spanish Colonial elevations and fixed overhead shutters that contribute to the Tuscan style. Inside, he likes designing life-style features such as snail showers and wine closets, as well as ceiling treatments that help create the style and energy of a house.

—Debra Rinard



McGlone

By Deb Rinard

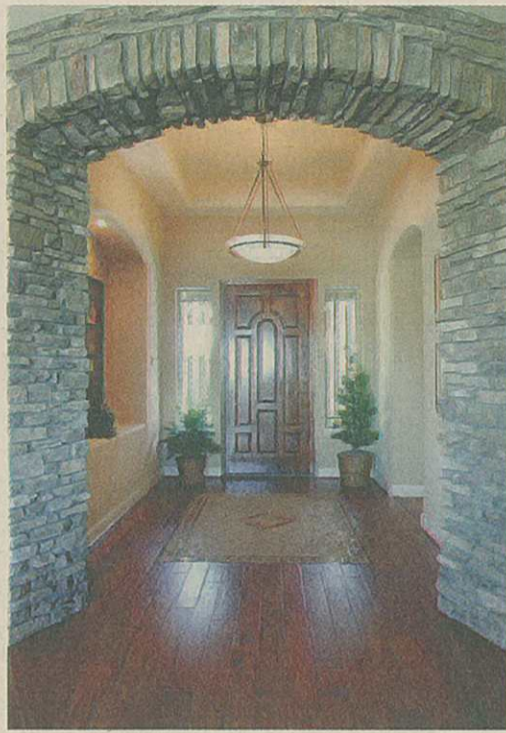
He sketches new home designs with pencil and paper, adding a feature here, erasing another there.

Patrick McGlone, director of architecture for T.W. Lewis, prefers rudimentary tools to the computer when he designs. "It's easier to make changes with pad and pencil. You're always second-guessing yourself when you design a home," he says with a smile. Over the last three years, he has been responsible for 24 new home designs at T.W. Lewis; last year, he produced six.

He personally likes many different styles of homes but currently lives in a Frank Lloyd Wright Prairie-style home with lots of geometry and features. Someday he plans to design himself a European Old World-style home—something similar to the Andalusian model that T.W. Lewis will offer soon.

### Visual focal points

A 1990 graduate of the Arizona State University School of Architecture, McGlone wasn't sure if it he wanted to design new homes or commercial structures when he graduated. A stint with an architectural firm that designed custom and semi-custom homes showed him that it was home design he enjoyed most. "I like taking an exterior and an interior and creating a product that's very



T.W. Lewis

McGlone designs homes that create visual interest.

reflective of a client's needs, emotions and wants," he says. With residential design, you get to see the final product more quickly than you do with a commercial project.

What influences him as he designs a home for T.W. Lewis? "I strive to create visual focal points where your eye is drawn to a feature like a window or a niche," he says. "I like to create a sense of arrival when you come from the outside to the inside of a house. You want a 'wow' as you come in. You can do that with niches and a ceiling treatment—it might be an elliptical step ceiling, or it might have squares with scal-

loped corners or beams representing Old World timber. I always look for a strong axis to the back of the house where we typically have lots of windows. Seeing that pool of light and warmth makes people feel better."

When McGlone designs living areas, he always tries to provide a flexible arrangement of space. As a family grows older, a living room to the side of the foyer could become a den. Because buyers have indicated that they want great rooms—an open arrangement of kitchen, nook and family room as a family gathering and entertainment area—he includes it in his designs. Master bedrooms include sitting areas, a focus wall for an entertainment center opposite the bed, and plenty of windows for maximum light. French doors often lead from the master bedroom to the back patio.

### Piano-shaped islands

"Space is the overriding consideration in the kitchen," McGlone says. That encompasses countertops, usable corners and large, oversized islands. "I like piano-shaped islands, sculptured forms within a rectangular space. The unique shape offers a focal point."

Research also plays a role as the architect designs. "We want to be leading-edge, not bleeding edge," he says. "Our design needs to be notable, but it also has to be something our buyers will appreciate. We look for time-tested



Many of McGlone's designs include basements. Most feature 9-foot ceilings, a pair of bedrooms, a bathroom and a secondary family room.



Piano-shaped kitchen islands, like the one featured here, are among McGlone's favorite home features.

trends in concert with what our buyers feel is important."

One of those trends is buyers' desire to live in a unique community, even a nostalgic one that elicits memories of their childhood. "Buyers want a sense of permanence. Today that means traditional style, a house with a porch, for example," McGlone says. "We want to create communities that stand the test of time." While T.W. Lewis wants all of its homes to have a sophisticated, rich appearance, its architecture is moving to "more authentic styles reminiscent of neighborhoods of the early 20th century," McGlone says. "We're featuring open, flowing floor plans, wide halls, large bedrooms and ample storage space. Oversized closets are standard." Because buyers appreciate extra

bathrooms, McGlone offers an option in which an oversized closet becomes a bathroom as part of a suite.

### Spacious basements

A signature option at T.W. Lewis is a basement. "In some communities, more homes than not have basements," he says. "You get a game room, two bedrooms, a bath and lots of extra storage space. It's a nice amenity."

What's the best part about designing homes? "Going through the process of creating unique and exciting floor plans and elevations," McGlone says. "You can see what you start with, and you can see the final product. Some things turn out better than you thought they would. And some need to be modified—that's part of the excitement of it all."